

Certified Nursing Assistant

Vocational Training

Vocational Overview

A certified nursing assistant (CNA) provides basic care for medical patients. CNA healthcare settings include hospitals, skilled-nursing facilities, retirement communities, and in-home.

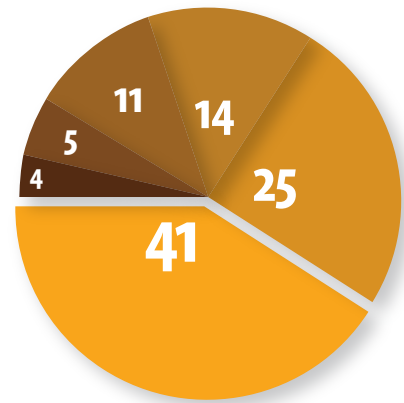
CNA employment includes the following duties:

- Assisting patients with daily activities
- Checking vital biological signs
- Completing medical reports

Career Outlook

National CNA employment projections between the years 2014 and 2024 estimate growth by 17%, translating to 267,800 jobs. California employs 98,040 CNAs, making the state the second largest CNA-employer in the nation. In the San Diego region, CNA is an in-demand employment category. The hourly mean wage for CNAs is \$14.96 in California. The average annual income of a San Diego CNA is \$30,930.

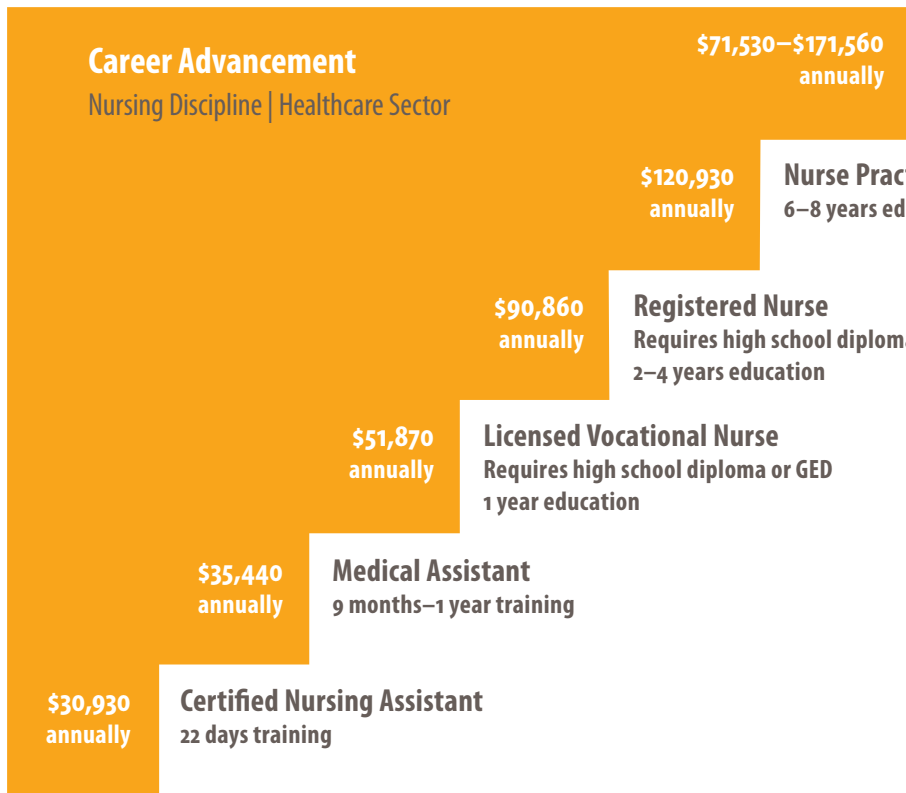
CNA Employers



- 4% Government
- 5% In-Home
- 11% Retirement Community
- 14% Other
- 25% Hospital
- 41% Skilled-Nursing Facility

Career Advancement

Nursing Discipline | Healthcare Sector



Data Sources

The American Red Cross
US Dep't of Labor, Bureau of Labor Statistics

January 2017 Edition



Nile Sisters
DEVELOPMENT INITIATIVE

Nile Sisters Development Initiative is a community-based organization that provides vital services to refugees and immigrants in the San Diego region. The NSDI mission is to educate, support, and offer training to refugee and immigrant women and their families to help them overcome barriers to social and economic self-reliance. Founded in 2001, NSDI assists refugees and immigrants to assimilate a new language, customs, and systems that are inherent to the American way of life. Between 2013 and 2015, NSDI assisted 5,600 refugees and immigrants through essential programs including our employment facilitation program, B2B. The program prepares refugees and other hard-to-reach populations in underserved communities for increased employment potential, which helps cultivate a strong and diverse workforce.

Nile Sisters Development Initiative | 6035 University Avenue, Suite 22 | San Diego, CA 92115-6343 | (619) 265-2959